

## Some of What's New in TransCAD 7.0

TransCAD is the most comprehensive, flexible, and capable travel demand modeling software ever created. TransCAD supports all important styles of travel demand modeling including sketch planning models, four-step demand models, and activity models with a complete toolkit for planners and traffic engineers.

TransCAD 7.0 includes new features and enhancements designed to increase the flexibility, ease of use, modeling accuracy, and computational performance:

### Highway modeling enhancements

- New line layer format supporting elevation data
- Very accurate network isochrones
- New traffic impact analysis module
- Faster assignments with turn penalties
- Toll revenue reports
- HCM 2010 analysis procedures

### Transit modeling innovations

- More realistic multi-path access and egress
- Computationally improved OD matrix estimation
- Faster select link analysis
- Revamped transit isochrones
- Enhanced schedule-based assignment

### Activity-Based Model (ABM) support

- Advanced choice modeling application frameworks (MDCEV and Hazard Duration)
- Destination choice with shadow pricing
- Efficient Monte Carlo choice simulator

### Powerful flowchart model interface

- Link model components, visualize specifications and parameters.

### New visualization and charting capabilities

#### Significant computational boost

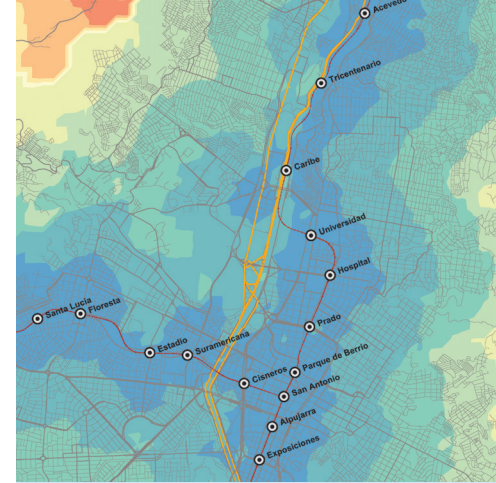
- Automated support for multi-threading, parallel computing and distributed computing
- Compute engines to facilitate parallel applications

#### Geographic Information Systems (GIS) features

- Web map layers
- More projections and coordinate systems
- 3D window, support for VRML, Google SketchUp, AutoDesk 3D
- Facility site location wizard
- Support for OMX open matrix format

#### Updated data

- Latest ACS and LEHD
- 2014 ZIP Codes
- New North America rail network
- Option for the latest HERE road networks



*A full Activity-Based Model (ABM) for Tel Aviv, Israel (with a population of 3.6 million) was efficiently implemented in TransCAD 7.0.*

*The Southern California Association of Governments (SCAG) ABM was developed in TransCAD 7.0, featuring a flexible flowchart interface and cutting-edge modeling capabilities predicting detailed activity patterns and schedules for over 18 million residents.*

*An advanced-practice model for the Association of Monterey Bay Area Governments (AMBAG) was delivered in TransCAD. The model highlights person-based trip generation, innovative destination choice models and 5D accessibility measures.*

*An accessibility toolkit was created for multi-modal accessibility calculations in TransCAD and on the Web.*

*TransCAD 7.0 was used to develop a freight waybill assignment and query tool for the Federal Railroad Administration (FRA).*